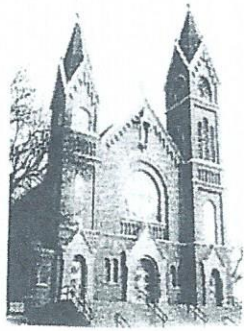


# 36th Annual Munichfest

" A Community Shared Festival "

\*NO OUTSIDE BEVERAGES ALLOWED ON GROUNDS\*

New Munich



## Saturday June 8th 2013

New Munich MN



Jaycee's

### OUTDOOR POLKA MASS ~ 8PM: FEATURING " STAN'S COUNTRY DUTCHMEN "

Little League Tournament: 8:30am



Old Timers Baseball Game



St. Martin Community Band: 3 - 4:30pm



### Children's Pedal Tractor Pull

Boys & Girls 4-11 11:00am



Food & Beverage Stand: 11am  
Beer Garden Bean Bags

For More Details See

The Parish Website

or

[www.facebook.com/NewMunichMunichfest](http://www.facebook.com/NewMunichMunichfest)

## DEAN O MITE

4:30pm-7pm & 9pm-1am

2pm Parade ~ Theme: **GAME SHOWS**

3pm ~ Stands Open: Quilt, Fancy Work, Bingo, Cake Walk & Pull Tabs

11pm ~ Parish Raffle and Quilt Drawing

Overall Chairperson Contact

Sandy Zierden (320) 837-5437 or (320) 256-3322

Steve & Shirly Worms (320) 837-5308 or (320) 256-5308

Lyle & Peggy Klasen (320) 260-6488

Sponsored By: Immaculate Conception Parish & The New Munich Jaycees